

// MATERIALES Y ACABADOS FJORD

Las puertas de este modelo son de 14 mm de espesor en los distintos acabados indicados a continuación.

PUERTAS

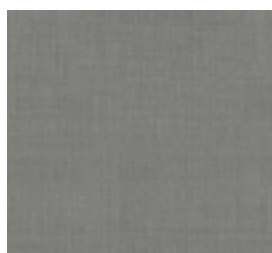
MELAMINICO COTTON



WHITE COTTON

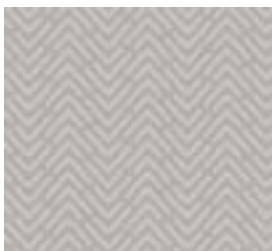


BEIGE COTTON



GREY COTTON

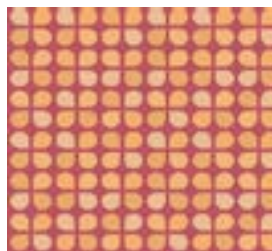
LAMINADO TEXTURE



SPEZIE



SALE MARINO



AGRUMI

MELAMINICO MADERA



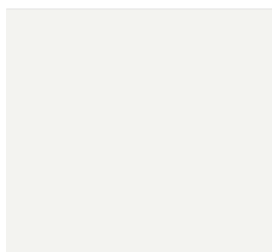
CEDRO CHIARO



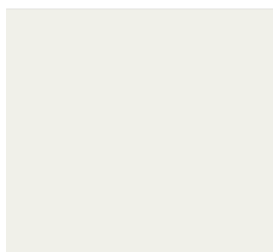
CEDRO SCURO

**LACADO MATE,
BRILLANTE,
SUPER MATT**

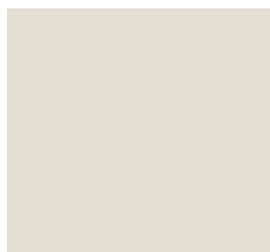
(24 colores)



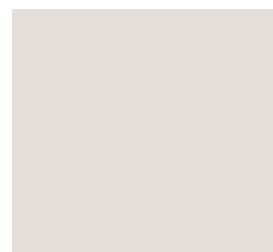
BIANCO RAL 9003



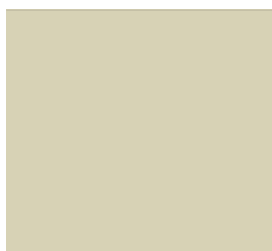
BIANCO



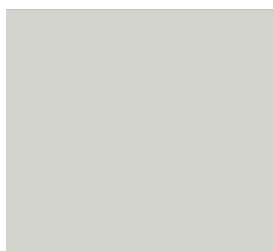
BIANCO SALE



BIANCO GRIGIO 233



SABBIA ORO



GRIGIO NUBE 239



TORTORA



CAPPUCCINO



CAMOSCIO



CORDA



ROSSO CORSA



BLU PETROLIO



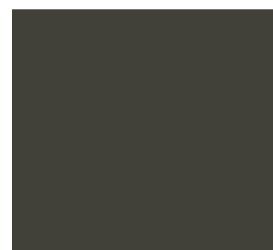
MUSCHIO



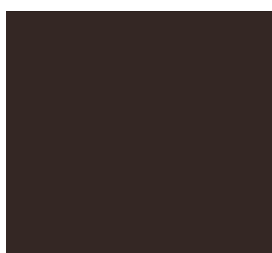
GRIGIO



GRIGIO ARDESIA 7015



VERDE MARRONE

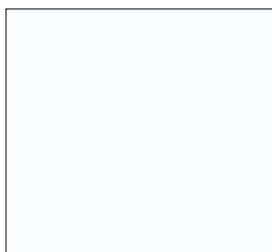


CIOCCOLATO



NERO PROFONDO

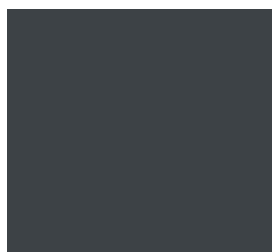
ESTRUCTURA



BIANCO



GRIGIO SABBIA



ANTRACITE

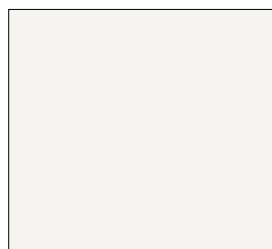
ZOCALO



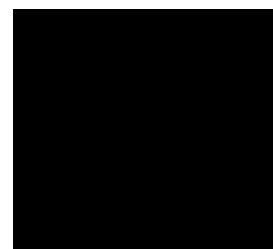
ALUMINIO MATT



ALUMINIO CHAMPAGNE



ALUMINIO BLANCO



ALUMINIO NEGRO

18 COLORES
+
LACADOS RAL

ZOCALO LACADO MATE EN:

- > 24 COLORES ACABADO PUERTA
- > LACADOS RAL

Posibles diferencias de tonalidades de los colores y de las maderas no tienen que considerarse defectos de fabricación puesto que dichas variaciones se deben al comportamiento natural de los elementos expuestos a la luz doméstica.